



# PathWave Lab Operations for Networking

## QuickStart Guide

### Contents

Step 1 .....	2
Prepare the Hardware .....	2
Step 2 .....	2
Reserve IP, Download Image, & Retrieve License .....	2
Step 3 .....	3
Import VE Image and Assign Network Interfaces .....	3
Step 4 .....	3
Finish Import .....	3
Step 5 .....	3
Access the console of the new VM .....	3
Step 6 .....	4
Configure the Management Interface of the SDL Controller with a Static IP .....	4
Step 7 (Optional) .....	5
Configure the Secondary Interface (eth1) of the SDL Controller .....	5
Step 8 .....	5
Activate Your System using a License Key .....	5
Step 9 .....	6

## Step 1

### Prepare the Hardware

The server that is hosting the virtual environment must meet the minimum following specifications:

- 8 GB of available Memory minimum
- 64 GB of available HD space minimum
- 4 CPUs minimum
- Wired access to internet (not a wireless Ethernet connection)

The server should be connected to a LAN, which has Internet connectivity, as shown in Figure 1.

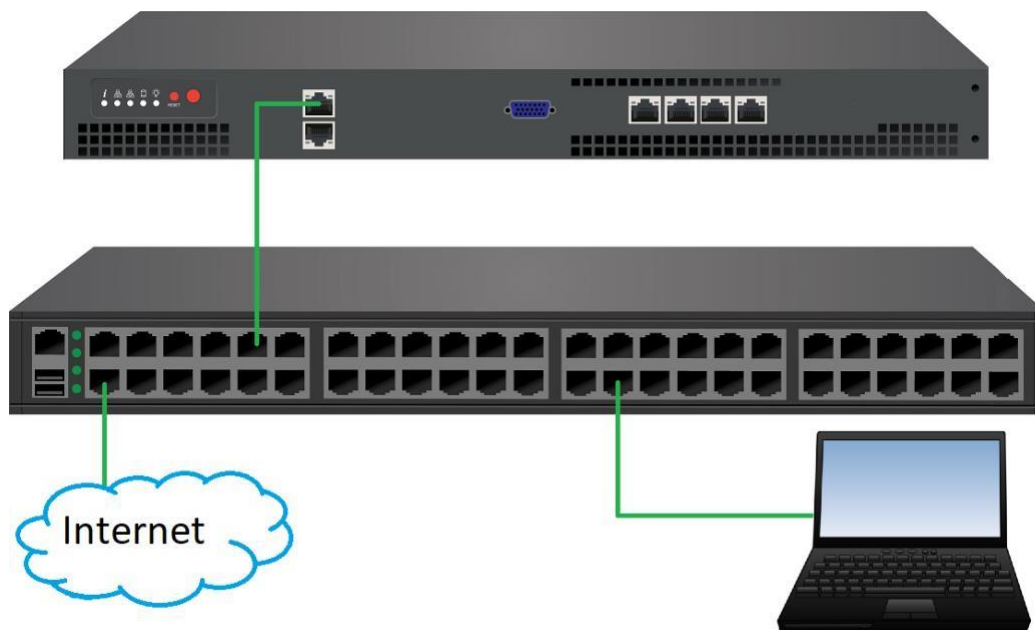


Figure 1

## Step 2

### Reserve IP. Download Image, & Retrieve License

Prepare a static IP Address, Netmask, Gateway Address and DNS Server that provides reachability to the Internet.

Use the PWLO-N OVA file supplied to you by a Keysight Representative.

Contact Wes Hand for a license and the OVA Link

## Step 3

### Import VE Image and Assign Network Interfaces

Import the PWLO-N OVA file. (Examples: In VMware vSphere Client, use *Deploy OVF Template*. In XenCenter, use *Import Source OVF/OVA Package*.)

Verify that the available space is the 64GB minimum. (Note: You cannot increase the disk size later. 64GB is the minimum *and* maximum storage size that can be set for the SDL Controller.)

Map the available network to allow for Internet access. You can assign up to two network interfaces for the controller for dual-homing purposes. The interface 'eth0' is your management interface and 'eth1' is your non-management interface that can be optionally used to manage a secondary network.

## Step 4

### Finish Import

Wait until import template/package is completed. Once completed, PWLM-N VM should be available in your inventory on the server.

If desired, you may rename the VM.

## Step 5

### Access the console of the new VM

Connect to the console of the PWLO-N VM using the client software for your hypervisor.

Once connected, a login page similar to that shown in Figure 2.

Enter the username 'admin' and password 'admin'

```

+-----+-----+
| Model | LS200VE SDL Controller |
+-----+-----+
| System ID | edea-0d13-acdb-f238-70a5 |
+-----+-----+
| Customer ID | keysight |
+-----+-----+
| Build Version | 1.0.1-Keysight-Beta |
+-----+-----+
| Build date | Fri Feb 28 17:22:03 PST 2020 |
+-----+-----+
| Address | 10.36.84.199 |
+-----+-----+
| Login | http://10.36.84.199 |
+-----+-----+

Copyright © 2017-2020 Keysight Technologies. All rights reserved.

LS200VE-Controller login:

```

Figure 2

## Step 6

### Configure the Management Interface of the SDL Controller with a Static IP

After logging into the console, you can type '?' for a help menu.

You must set the 'mgmt' or 'eth0' IP address along with the netmask, gateway, and domain name servers (dns). You can use the IP address reserved in Step 2 of this guide. This is the interface that you will use to connect to SDL Controller's Web UI.

To set the management interface, follow the syntax shown in the help menu or refer to Figure 3.

```

LS200VE-Controller#
LS200VE-Controller# ?
-----
Command          - Description
-----
ping              - Ping IP or hostname.
reboot            - Reboot the system.
set eth0 ip       - Set Management IP Address.
                  Ex: set eth0 ip <IP> <NETMASK> <GATEWAY>
                  <DNS1> <DNS2>
                  Ex: set eth0 ip 192.168.1.100 255.255.255.0
                  192.168.1.1 192.168.1.1 8.8.8.8
set eth1 ip       - Set Secondary interface IP Address.
                  Ex: set eth1 ip 192.168.2.100 255.255.255.0
set hostname      - Set hostname.
show eth0 ip      - Show Management IP.
show eth1 ip      - Show eth1 IP.
show version      - Show LS software version.
shutdown          - Shutdown the system
system activate    - Activate license on this system.
system webserver restart - Restart web server.
LS200VE-Controller#
LS200VE-Controller# set eth0 ip 10.4.18.223 255.255.252.0 10.4.16.1 10.4.5.7 8.8.8.8
LS200VE-Controller#
LS200VE-Controller#

```

Figure 3

## Step 7 (Optional)

### Configure the Secondary Interface (eth1) of the SDL Controller

An **optional** secondary interface (eth1) for dual-homing is available for configuration in the SDL Controller as well. This secondary interface is used for IP connectivity with network resources that are on the secondary subnet. By configuring the secondary interface, network resources that are on both the primary and secondary subnets will be reachable by the SDL Controller.

Please note however that the Web UI for the SDL Controller will only be available through the primary interface.

## Step 8

### Activate Your System using a License Key

In the console, activate your system by using the “system activate” command. As shown in Figure 4, you will be prompted to enter your Customer ID, which is available at the Customer Portal (<http://customers.tokalabs.com>).

After that, you will be prompted to provide 4 or more consecutive characters in your License Key. Once the key is successfully entered, the system will begin its activation process.

(Please allow several minutes for the process to complete. Do **NOT** disrupt the process by powering off or shutting down the system.)

```

LS200VE-Controller# ?
-----
Command                - Description
-----
ping                    - Ping IP or hostname.
reboot                  - Reboot the system.
set eth0 ip              - Set Management IP Address.
                        Ex: set eth0 ip <IP> <NETMASK> <GATEWAY>
                        <DNS1> <DNS2>
                        Ex: set eth0 ip 192.168.1.100 255.255.255.0
                        192.168.1.1 192.168.1.1 8.8.8.8
set eth1 ip              - Set Secondary interface IP Address.
                        Ex: set eth1 ip 192.168.2.100 255.255.255.0
set hostname            - Set hostname.
show eth0 ip             - Show Management IP.
show eth1 ip            - Show eth1 IP.
show version            - Show LS software version.
shutdown                - Shutdown the system
system activate          - Activate license on this system.
system webserver restart - Restart web server.
LS200VE-Controller#
LS200VE-Controller# system activate
Enter Customer ID:
Enter 4+ consecutive characters in Lic Key:

```

Figure 4

## Step 9

### Log into your SDL Controller

After the license activation is complete, use a web browser to connect to your SDL Controller by navigating to its primary interface's IP address (eth0) as shown in Figure 5.

Enter the default username "admin" and password "admin" to gain access to your SDL Controller.

Figure 5



## PathWave Lab Operations for Networking

Username/Email

Password

☐ Remember me

Sign In

All rights reserved. No part of this publication may be reproduced without prior written permission from Keysight. Keysight is a registered trademark. All other product names, company names, logos or other designations mentioned herein are trademarks or registered trademarks of their respective owners. Keysight reserves the right to make changes in specifications and other information contained in this document without prior written notice. The information provided herein is subject to change without notice.